

Tower Crane & Construction Rescue

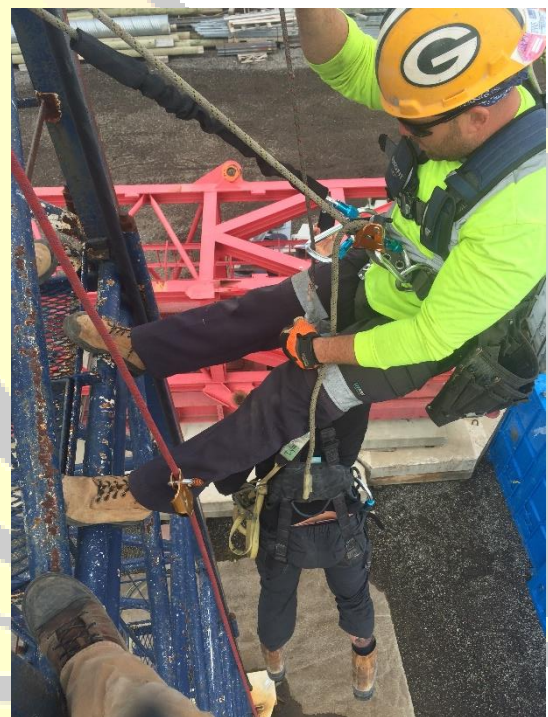
This course will provide the learner with the required knowledge to perform a Tower Crane and Construction Rescue. At the end of this course you will be able to demonstrate how to setup and dismantle rescue systems used in typical rescues from a tower crane and/or suspended casualties on a construction site. Each participant will be required to pass a written test with a minimum 75%, be familiar with all equipment, rigging and related equipment, and demonstrate their ability to perform a daily inspection. A complete understanding of the workings of the descent system must be demonstrated and the ability to instruct workers in the correct procedures using the descent system.

Prerequisite: Valid Standard First Aid Course and CPR & Valid Fall Protection Training (CPO Approved if applicable)

Topics Covered

- Legislation (OH&S, CSA)
- Hazards Identification and Assessment
- Rescue Requirements
- Roles and Responsibilities
- Inspection of all related equipment
- Identify proper anchor points
- Proper use of PPE
- Refresher of fall related legislation Federal and Provincial
- Rescue techniques using the applicable Descent Device
 - Crane
 - Construction – Suspended Casualty (ie. Worker fallen off leading edge)
- Patient Packaging
- Trauma Mitigation

Length of Training - 16hr (2 Days)



CERTIFICATION IS VALID FOR TWO YEARS!

Our instructors will go anywhere in Ontario to train your team!!

Tel: 416-999-9304 Burlington

Tel: 519-551-9383 London

Head Office: 1439 Legion Rd, Burlington, ON L7S 1T6